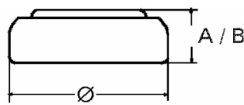


Data Sheet

Primary Silver

V 76 PX



Type Number..... 4075
Designation IEC..... SR 44
System..... Silver oxide/ Zinc /
 KOH - Electrolyte

Nominal Voltage..... 1,55 V
Typical Capacity C..... 145 mAh
 Load 5,6 kOhm, at 20°C down to 1.2 V

Weight (approx.)..... 2,4 g
Volume..... 0,51 ccm
Coding..... Manufacturing Quarter/Year
 by Letter Code

Temperature Ranges min max.
Storage..... -10°C 65°C
Discharge..... -10°C 65°C

Dimensions min max.
Diameter..... 11,25 11,6
Height (A/B)..... 5 5,4

Segment..... Watch/High Drain

Main Applications..... Watch
 Photo
 Electronic

Typical Capacities (at 20°C)

Discharge Type	Load	End Voltage: 1.2V
Continuous 24h/d, 7d/w Current [μ A]	5600 Ω 275	Time: 545 h Capacity [mAh]: 145 Energy [MWh]: 215

All Data contained herein is for single cells
 For battery applications, performance data may vary from single cell data, depending on specific battery configuration