

JBC

www.jbctools.com



PHS Table Support

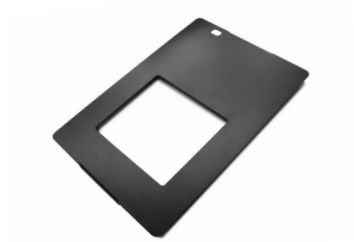
Ref. PHS-STa

Packing List

The following items should be included:

PHS Table Support 1 unit
 Ref. PHS-STA

Workbench cover for PHS support 1 unit
 Ref. 0019592



Small workbench cover for PHS support 1u
 Ref. 0019537

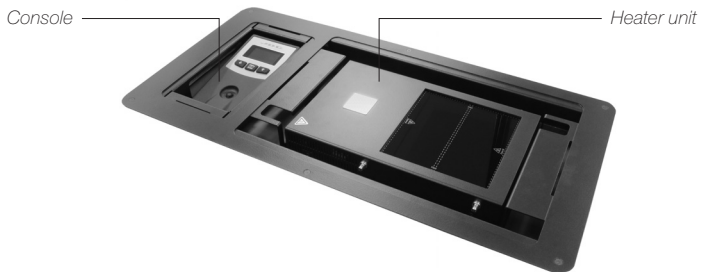
Screws 6 units
 Ref. 0019681

Manual 1 unit
 Ref. 0019676



Features

Use the **PHS Table Support** to place the preheater on your workbench and do not occupy space.



Options

Cover and protect the work space according to your work needs.



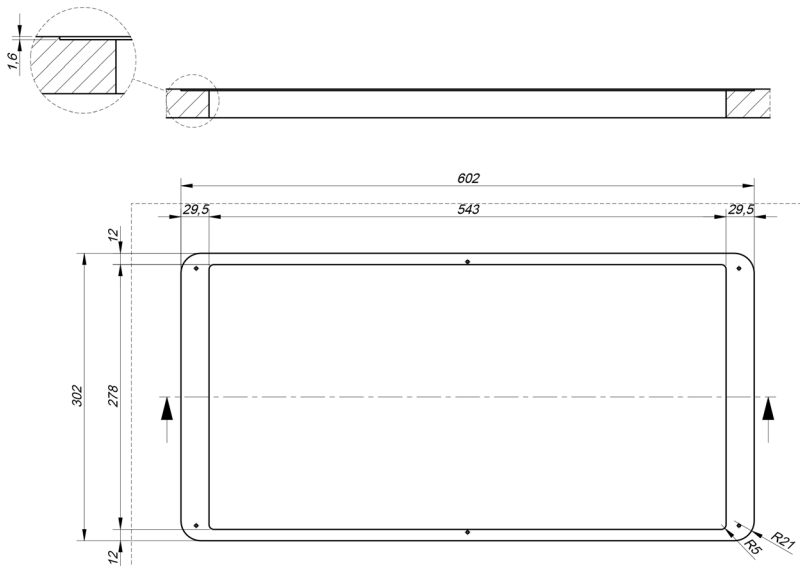
1 Protect your work space except of the heating area with the workbench cover (Ref. 0019592).



2 If you work with a preheater support (Ref. PHS-SA) protect the work space with the small workbench cover (Ref. 0019592).

Assembly

Make a hole in your work table according to the figure below. Fix the PHS table support on your workbench with the supplied screws.



Specifications

- Weight: 2 kg (4.41 lb)
- Dimensions: 302 x 602 mm (11.89 x 23.70 in)

Complies with CE standards.
ESD protected.

JBC

Warranty

JBC's 2 year warranty covers this equipment against all manufacturing defects, including the replacement of defective parts and labour. Warranty does not cover product wear or misuse. In order for the warranty to be valid, equipment must be returned, postage paid, to the dealer where it was purchased. **Please register your warranty within 30 days of purchase in www.jbctools.com/productregistration.**



This product should not be thrown in the garbage.
In accordance with the European directive 2002/96/EC, electronic equipment at the end of their life must be collected and returned to an authorized recycling facility.



Manual in other languages available on our website

www.jbctools.com