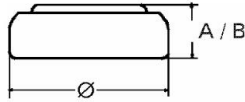


Type Number..... 379
Designation IEC..... SR63
System..... Silver oxide/ Zinc /
 NaOH - Electrolyte



Nominal Voltage..... 1,55 V
Typical Capacity C..... 15 mAh
 Load 68,1 k Ω , at 20°C down to 1.2 V

Weight (approx.)..... 0,23 g
Volume..... 0,06 ccm
Coding..... Manufacturing Month/Year
 by Letter Code

Temperature Ranges min max.
 Storage..... 0°C 60°C
 Discharge..... 0°C 60°C

Dimensions min max.
 Diameter (A)..... 5,65 5,80
 Height (A/B)..... 1,95 2,15

Typical Capacities (at 20°C)

Discharge Type	Load	End Voltage: 1.2V	
Continuous 24h/d, 7d/w	68100 Ω	Time:	665 h
		Capacity:	15 mAh
		Energy:	24 mWh

No publication or circulation of data to third parties without consent of VARTA Consumer Batteries

All Data contained herein is for single cells For battery applications, performance data may vary from single cell data, depending on specific battery configuration